

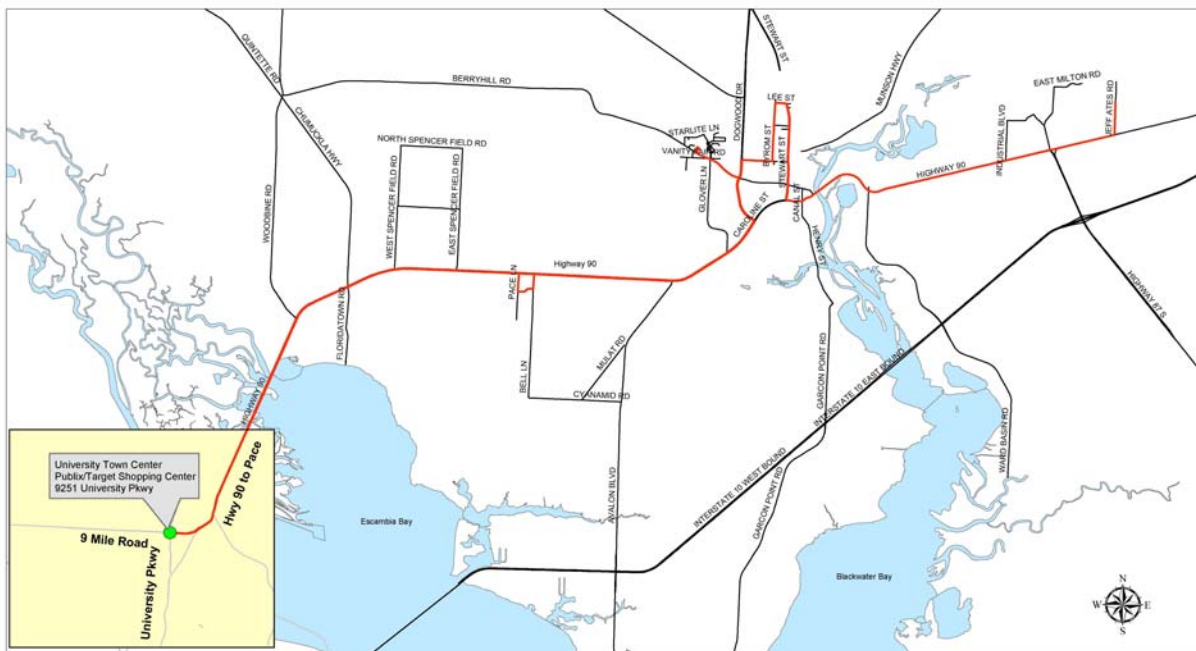


TRANSIT UPDATE

June 24, 2010



Santa Rosa County will soon start public transit “bus” service along US 90 between Nine Mile Road/University Parkway in Escambia County and the East Milton Industrial Park, extending to Jeff Ates Road to the new Blackwater River Correctional Facility. The route, shown in red below, is 23 miles long and will be serviced by three round trips daily Monday through Friday. Although primarily serving US 90, service will include stops on SR 87 (Stewart Street), Byrom Street, Park Avenue and Berryhill Road in Milton. At Nine Mile Road, riders can catch Escambia County Area Transit (ECAT) or the UWF Trolley. The service is a pilot program for one year, maybe two. Continued service of Santa Rosa Transit will depend on its success.



Legend

- Streets
- Transit Route



Santa Rosa County Potential Public Transit Bus Stops/Route

Disclaimer:
The GIS maps and data distributed by the Santa Rosa County BOCG departments are derived from a variety of public and private sector sources considered to be dependable, but the accuracy, completeness, and currency thereof are not guaranteed. The Santa Rosa County Commission makes no warranties, expressed or implied, as to the accuracy, completeness, currency, reliability, or suitability for any particular purpose of information or data contained in or generated from the County Geographic Database. Additionally, the Santa Rosa Commission or any agent, vendor, or employee thereof assumes no liability associated with the use of this data, and assumes no responsibility to maintain it in any manner or form.

Map Document:
C:\Production\Transportation\Photos\HWY 90 PUBLIC TRANSIT ROUTE\transit route 11017.mxd
1/26/2009 - 2:40 PM

- | | |
|-----------------|--|
| Start date: | Late summer |
| Fare: | \$ 1 per ride |
| Schedule: | Under development |
| Bus size: | 18 seats, two of those are fold-up for wheel chair positions |
| Lift: | Is equipped with a lift |
| Bicycles: | A bike rack on the front of the bus can hold two bicycles |
| Bus stop signs: | Blue bus stop signs with the Santa Rosa Transit logo will be installed along the route |
| Website: | Under development |
| Contact: | Ms. Nancy Model, County Transportation Planner, (850) 981-7080 or nancym@santarosa.fl.gov |